

NANAIMO CAMPUS SINGLE LINE ELECTRICAL DISTRIBUTION



REVISION LOG

2006 JUNE – ORIGINAL
by APPLIED ENGINEERING

2010 MARCH – UPDATED
by VIU

DRAWINGS LIST

E1.1 BUILDING OVERVIEW

E1.2 BUILDING OVERVIEW

E2 BUILDING 110

E3 BUILDING 120

E4 BUILDING 130

E5 BUILDING 150

E6 BUILDING 164

E7 BUILDING 180

E8 BUILDING 185

E9 BUILDINGS 190 AND 193

E10 BUILDING 200

E11 BUILDING 205

E12 BUILDING 250

E13 BUILDING 300

E14 BUILDING 305







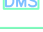
E15 BUILDING 305a

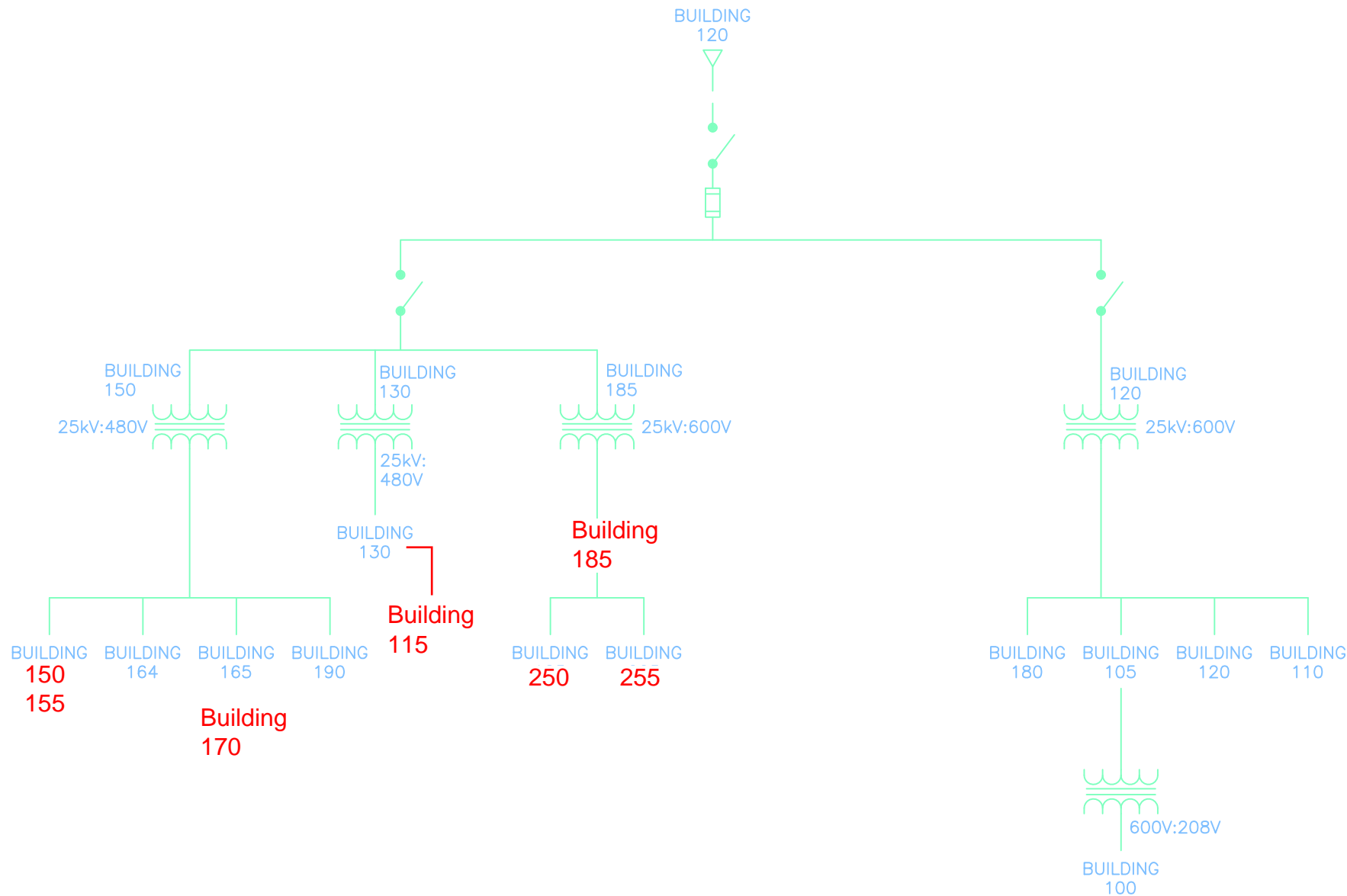
E16 BUILDINGS 310, 315 AND 320

E17 BUILDINGS 325, 330 AND 335

E18 BUILDINGS 340, 345 AND 355

E19 BUILDING 356

LEGEND OF SYMBOLS	
	BREAKER
	SWITCH
	FUSE
	AVAILABLE FAULT CURRENTS, IN AMPS
	TRANSFORMER
	UNDERGROUND CABLE CONNECTION
	DIGITAL METERING SYSTEM



1
E1.1

BUILDING OVERVIEW



NOT TO SCALE

**ELITE
ENGINEERING
LIMITED**
professional electrical
engineering services
#2-416 GARBALLY RD
VICTORIA, B.C. V8T 2K1
PHONE: (250) 704-1177
FAX: (250) 704-1187



seal

AES
applied engineering
solutions Ltd.
3rd Floor, 1815 Blanshard Street • Victoria • British Columbia • V8T 5A4
Ph: (250) 381 6121 • Fax: (250) 381 6811

project

**VANCOUVER ISLAND UNIVERSITY
ELECTRICAL DISTRIBUTION**

drawing title

NANAIMO CAMPUS OVER VIEW

designed

scale

AS NOTED

date

MAR-12-2010

drawn

project no.

checked

drawing no.

rev.

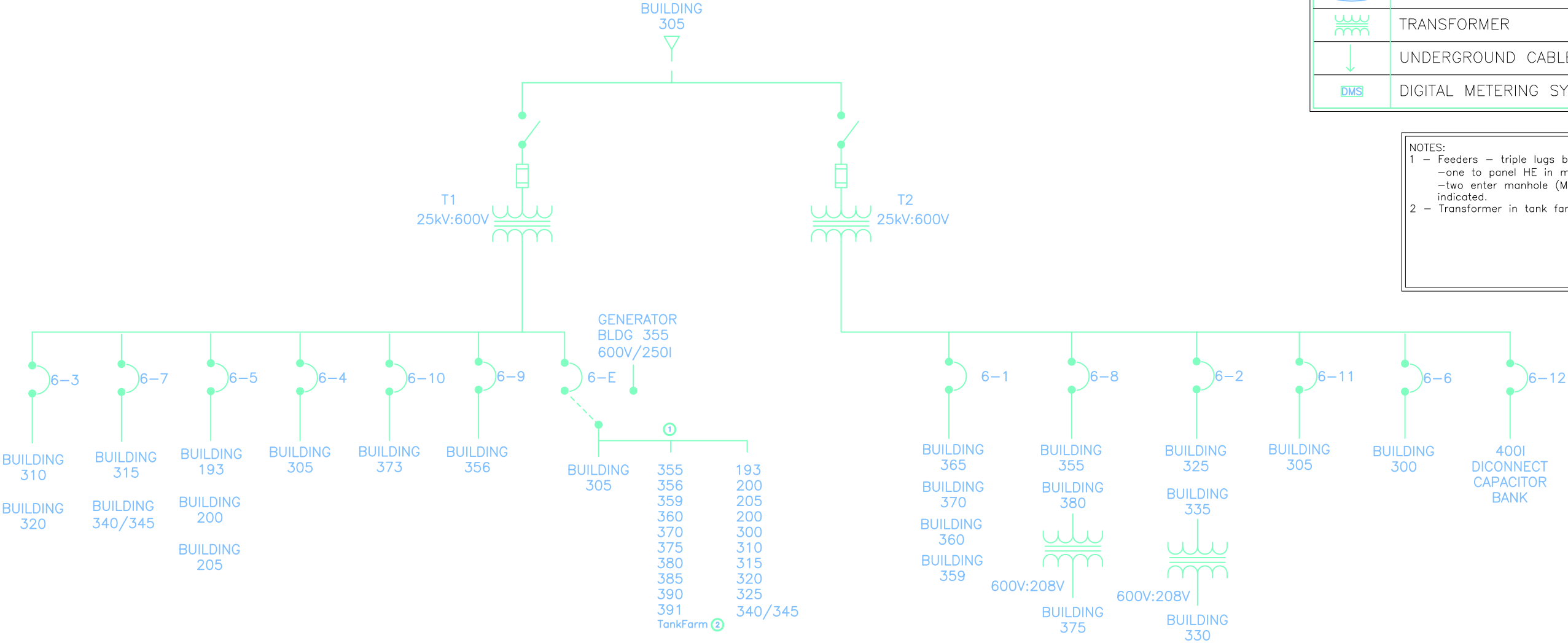
approved

E1.1

3

LEGEND OF SYMBOLS	
	BREAKER
	SWITCH
	FUSE
	AVAILABLE FAULT CURRENTS, IN AMPS
	TRANSFORMER
	UNDERGROUND CABLE CONNECTION
	DIGITAL METERING SYSTEM

NOTES:	
1 - Feeders - triple lugs bottom of robonic.	
-one to panel HE in main Vault (bldg 305)	
-two enter manhole (MH) system and go to building indicated.	
2 - Transformer in tank farm - powered not used.	



1 BUILDING OVERVIEW
E1.2 NOT TO SCALE

ELITE
ENGINEERING
LIMITED

professional electrical
engineering services

#2-416 GARBALLY RD
VICTORIA, B.C. V8T 2K1
PHONE: (250) 704-1177
FAX: (250) 704-1187

VANCOUVER ISLAND
UNIVERSITY

seal

applied engineering
solutions Ltd.

3rd Floor, 1815 Blanshard Street • Victoria • British Columbia • V8T 5A4
Ph: (250) 381 6121 • Fax: (250) 381 6811

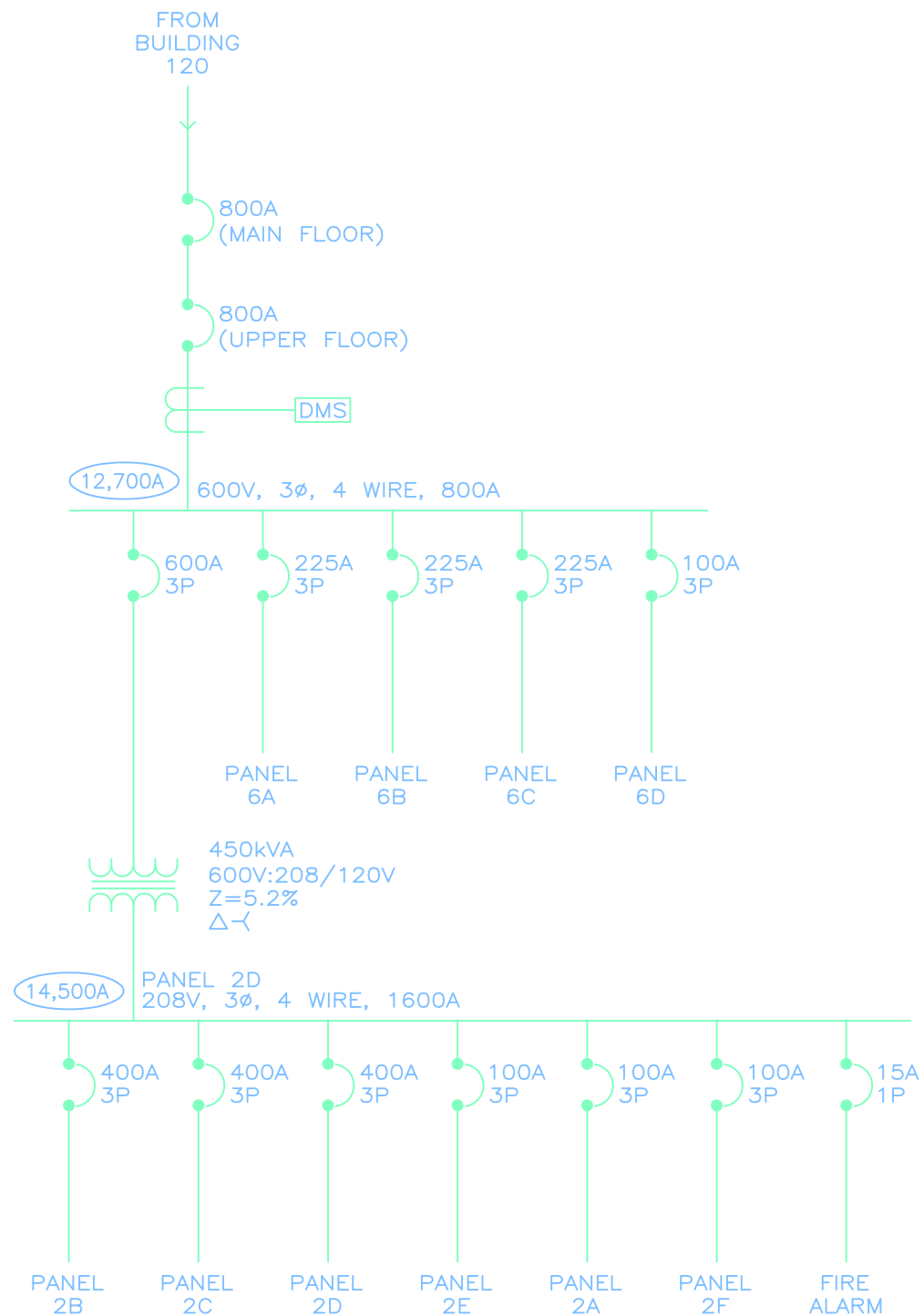
project

VANCOUVER ISLAND UNIVERSITY
ELECTRICAL DISTRIBUTION

drawing title

NANAIMO CAMPUS OVER VIEW

designed	scale AS NOTED	date MAR-12-2010
drawn	project no.	
checked	drawing no.	rev.
approved	E1.2	3



1 BUILDING 110
E2 NOT TO SCALE

**ELITE
ENGINEERING
LIMITED**
professional electrical
engineering services
#2-416 GARBALLY RD
VICTORIA, B.C. V8T 2K1
PHONE: (250) 704-1177
FAX: (250) 704-1187

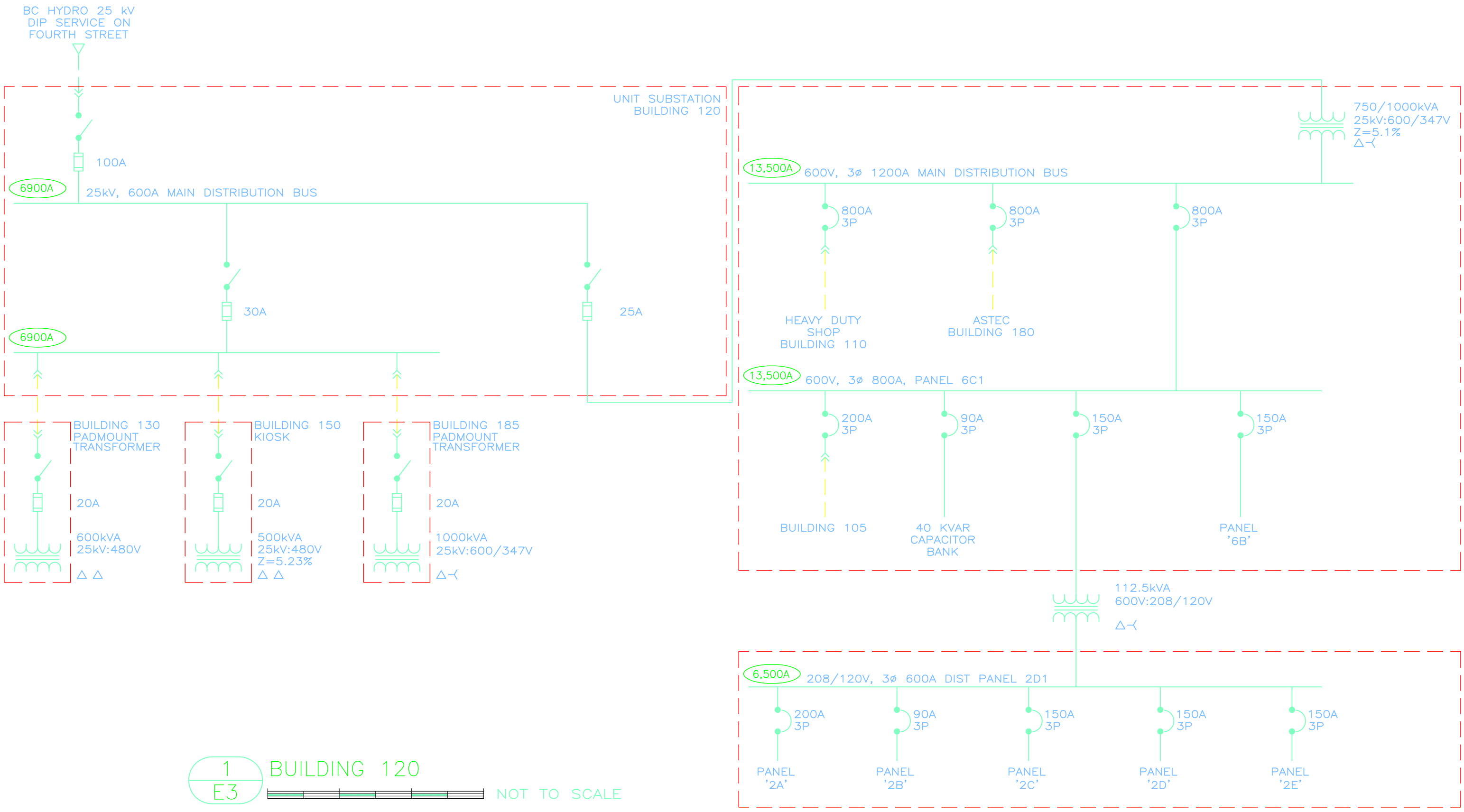


seal





project
**VANCOUVER ISLAND UNIVERSITY
ELECTRICAL DISTRIBUTION**
drawing title
BUILDING 110

designed	scale AS NOTED	date MAR-12-2010
drawn	project no.	
checked	drawing no. E2	rev. 1
approved		

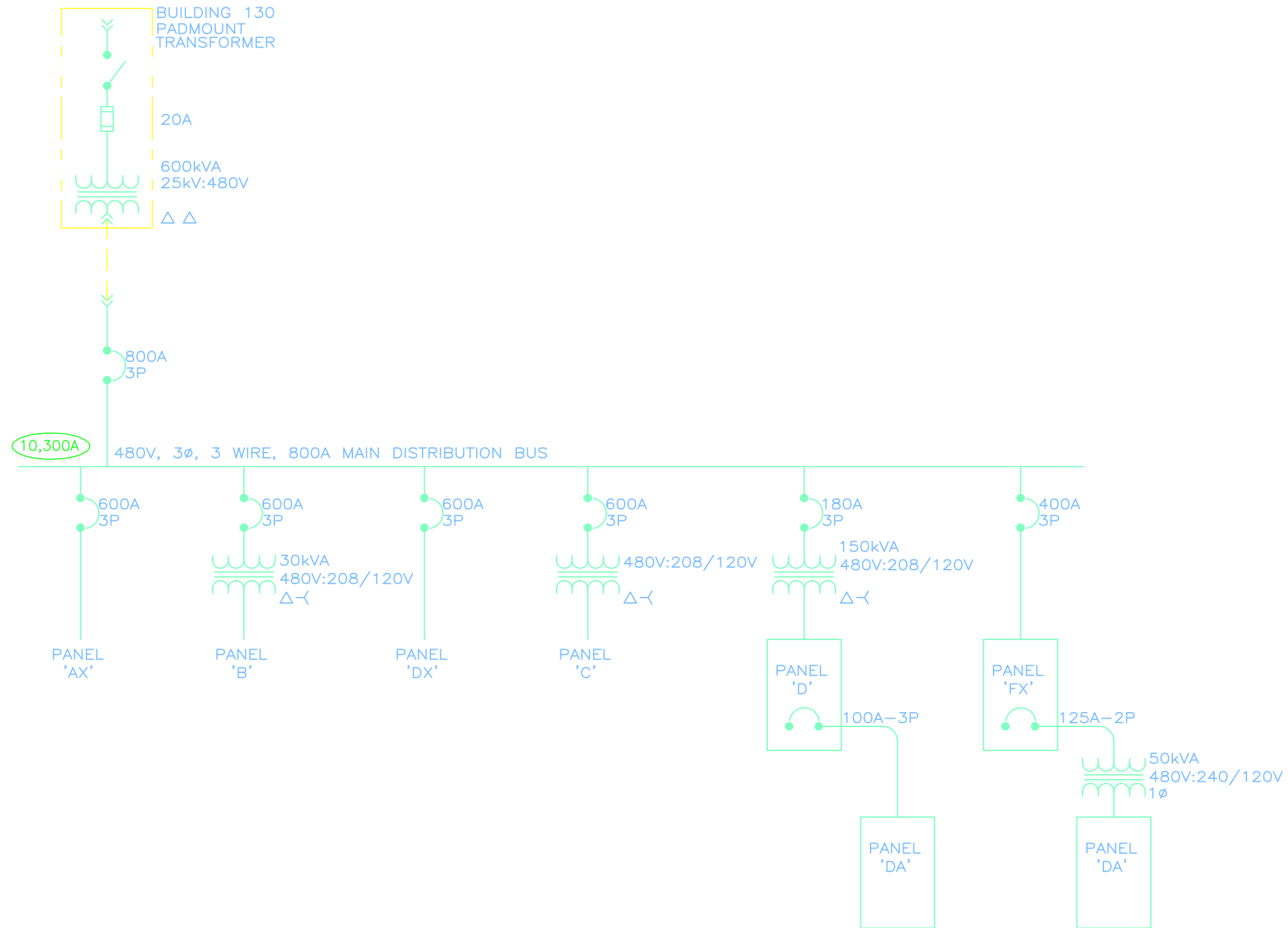


1 BUILDING 120
E3

NOT TO SCALE

ELITE ENGINEERING LIMITED professional electrical engineering services #2-416 GARBALLY RD VICTORIA, B.C. V8T 2K1 PHONE: (250) 704-1177 FAX: (250) 704-1187	 VANCOUVER ISLAND UNIVERSITY	seal	 applied engineering solutions Ltd. 3rd Floor, 1815 Blanshard Street • Victoria • British Columbia • V8T 5A4 Ph: (250) 381 6121 • Fax: (250) 381 6811	project	VANCOUVER ISLAND UNIVERSITY ELECTRICAL DISTRIBUTION		designed	scale	AS NOTED	date	MAR-12-2010		
				drawing title	BUILDING 120		drawn	project no.		checked	drawing no.		rev.

approved	E3	1
----------	-----------	----------



1
E4

BUILDING 130

NOT TO SCALE

**ELITE
ENGINEERING
LIMITED**
professional electrical
engineering services
#2-416 GARBALLY RD
VICTORIA, B.C. V8T 2K1
PHONE: (250) 704-1177
FAX: (250) 704-1187

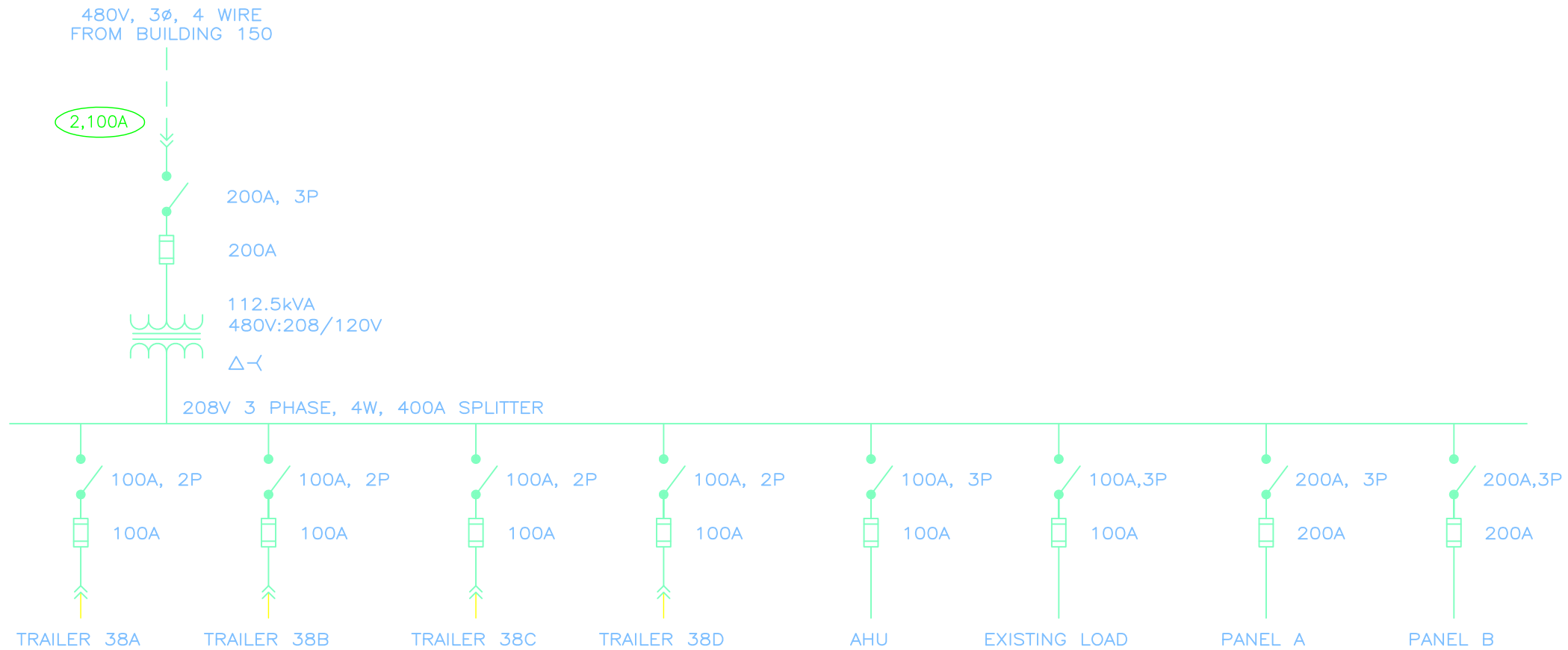


seal



project
**VANCOUVER ISLAND UNIVERSITY
ELECTRICAL DISTRIBUTION**
drawing title
BUILDING 130

designed	scale AS NOTED	date MAR-12-2010
drawn	project no.	
checked	drawing no. E4	rev. 1
approved		



1
E6

BUILDING 164

NOT TO SCALE

**ELITE
ENGINEERING
LIMITED**
professional electrical
engineering services
#2-416 GARBALLY RD
VICTORIA, B.C. V8T 2K1
PHONE: (250) 704-1177
FAX: (250) 704-1187

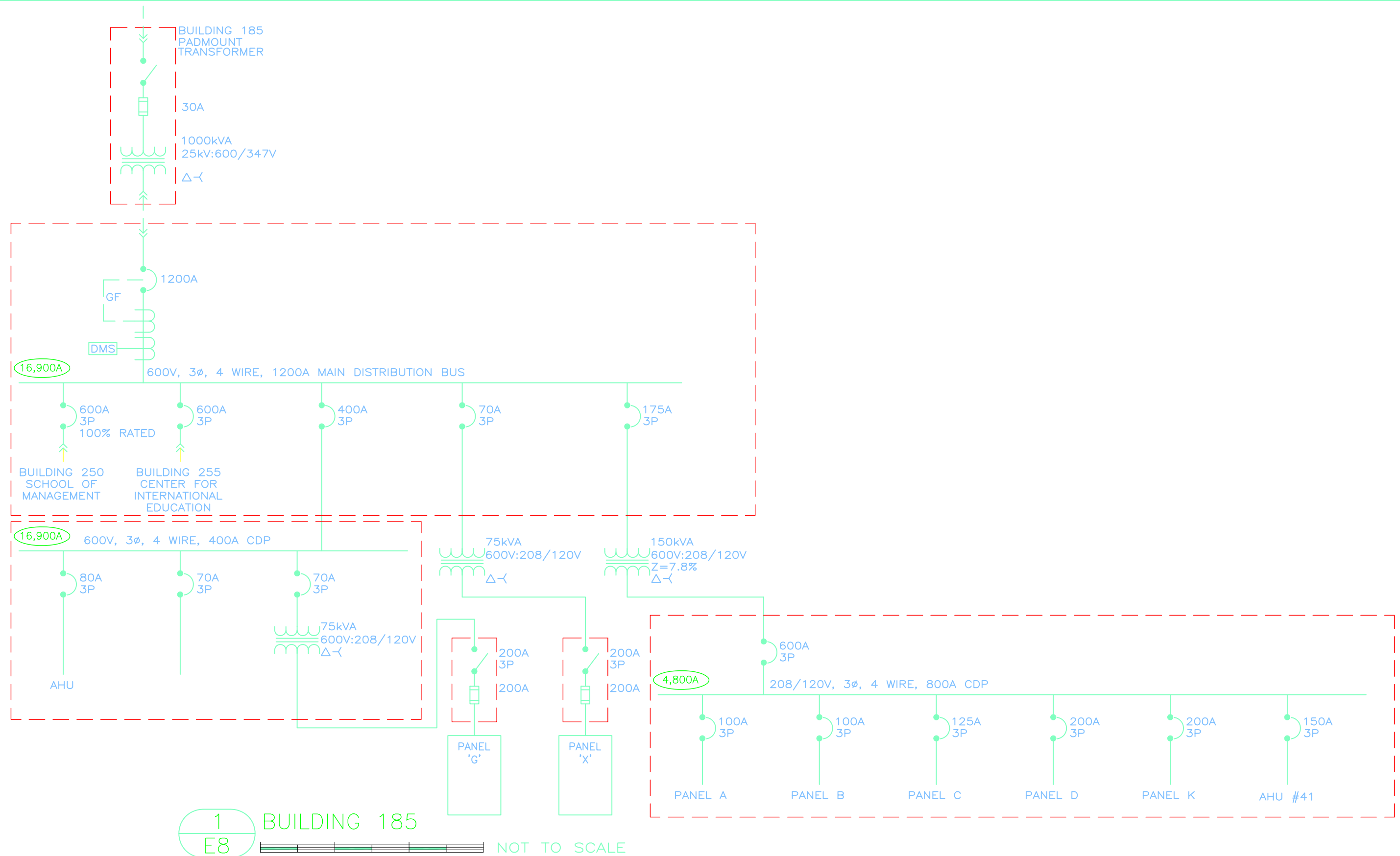


seal

AES
applied engineering
solutions Ltd.
3rd Floor, 1815 Blanshard Street • Victoria • British Columbia • V8T 5A4
Ph: (250) 381 6121 • Fax: (250) 381 6811

project
**VANCOUVER ISLAND UNIVERSITY
ELECTRICAL DISTRIBUTION**
drawing title
BUILDING 164

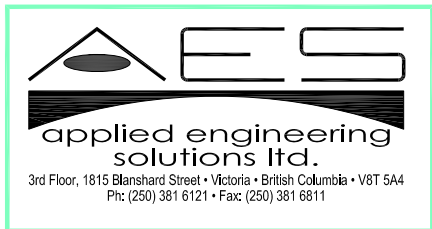
designed	scale AS NOTED	date MAR-12-2010
drawn	project no.	
checked	drawing no. E6	rev. 1
approved		



ELITE
ENGINEERING
LIMITED
professional electrical
engineering services
#2-416 GARBALLY RD
VICTORIA, B.C. V8T 2K1
PHONE: (250) 704-1177
FAX: (250) 704-1187

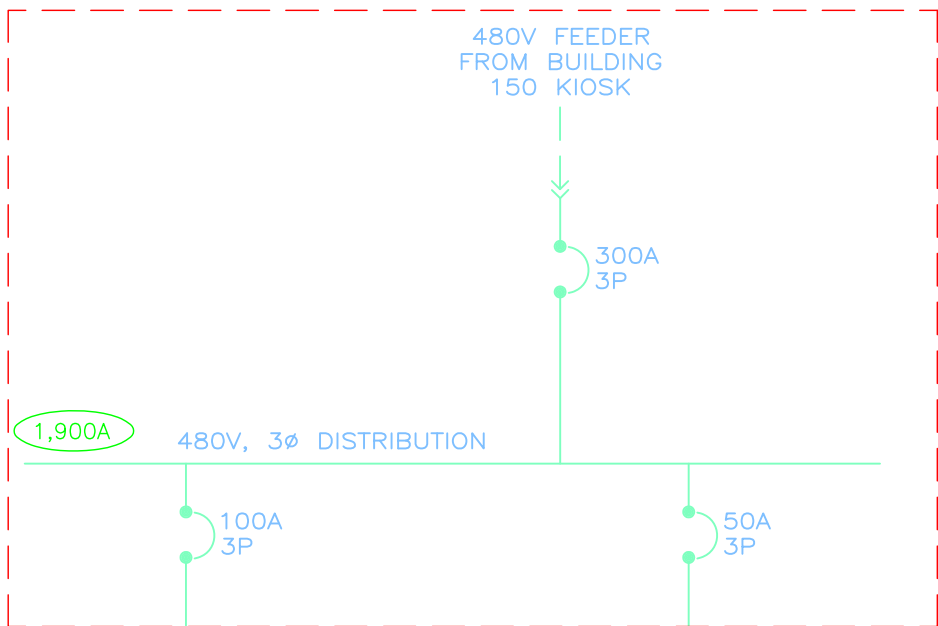


seal

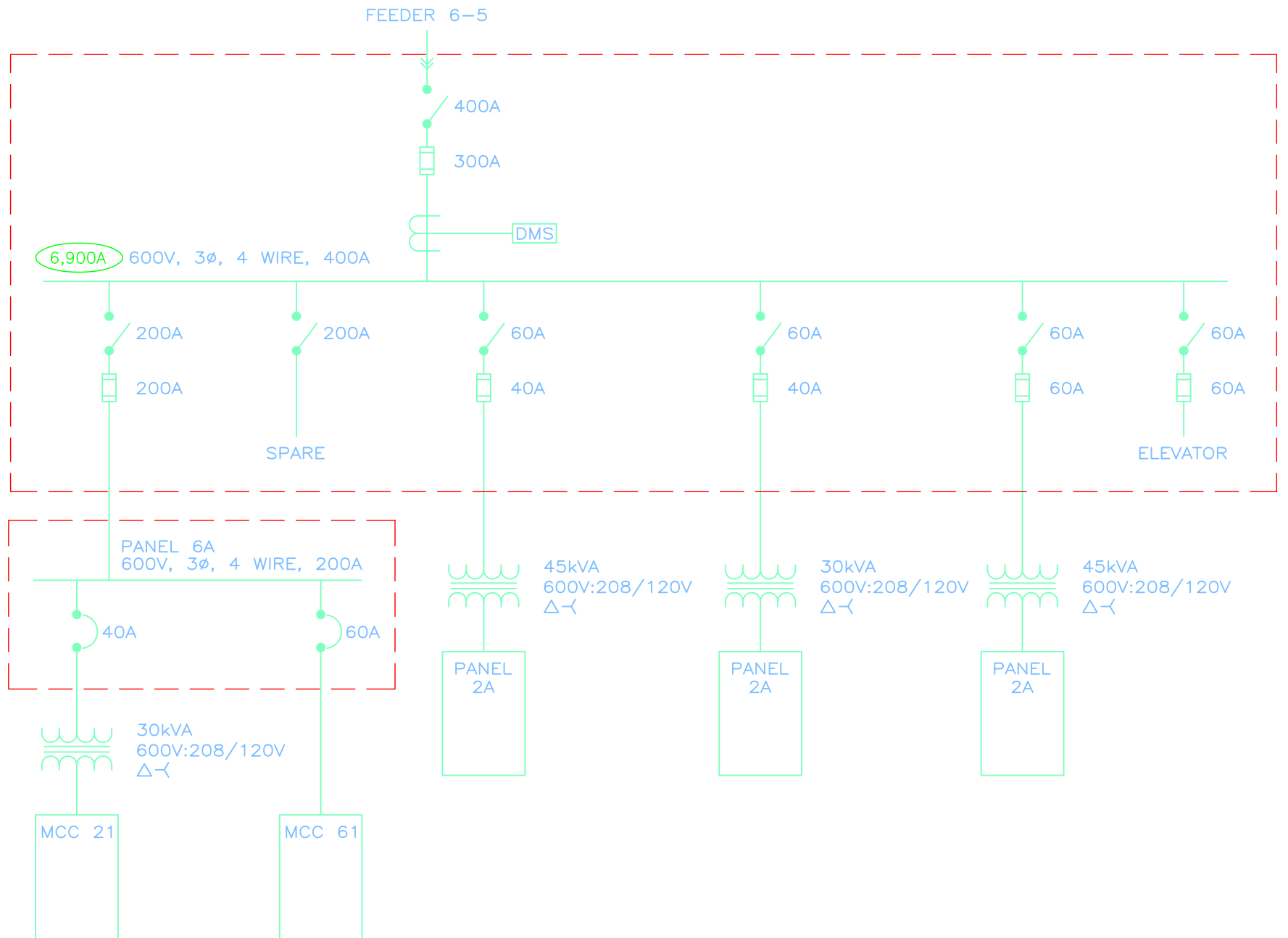


project
**VANCOUVER ISLAND UNIVERSITY
ELECTRICAL DISTRIBUTION**
drawing title
BUILDING 185

designed	scale AS NOTED	date MAR-12-2010
drawn	project no.	
checked	drawing no. E8	rev. 1
approved		



1 BUILDING 190
E9 NOT TO SCALE



2 BUILDING 193
E9 NOT TO SCALE

**ELITE
ENGINEERING
LIMITED**
professional electrical
engineering services
#2-416 GARBALLY RD
VICTORIA, B.C. V8T 2K1
PHONE: (250) 704-1177
FAX: (250) 704-1187

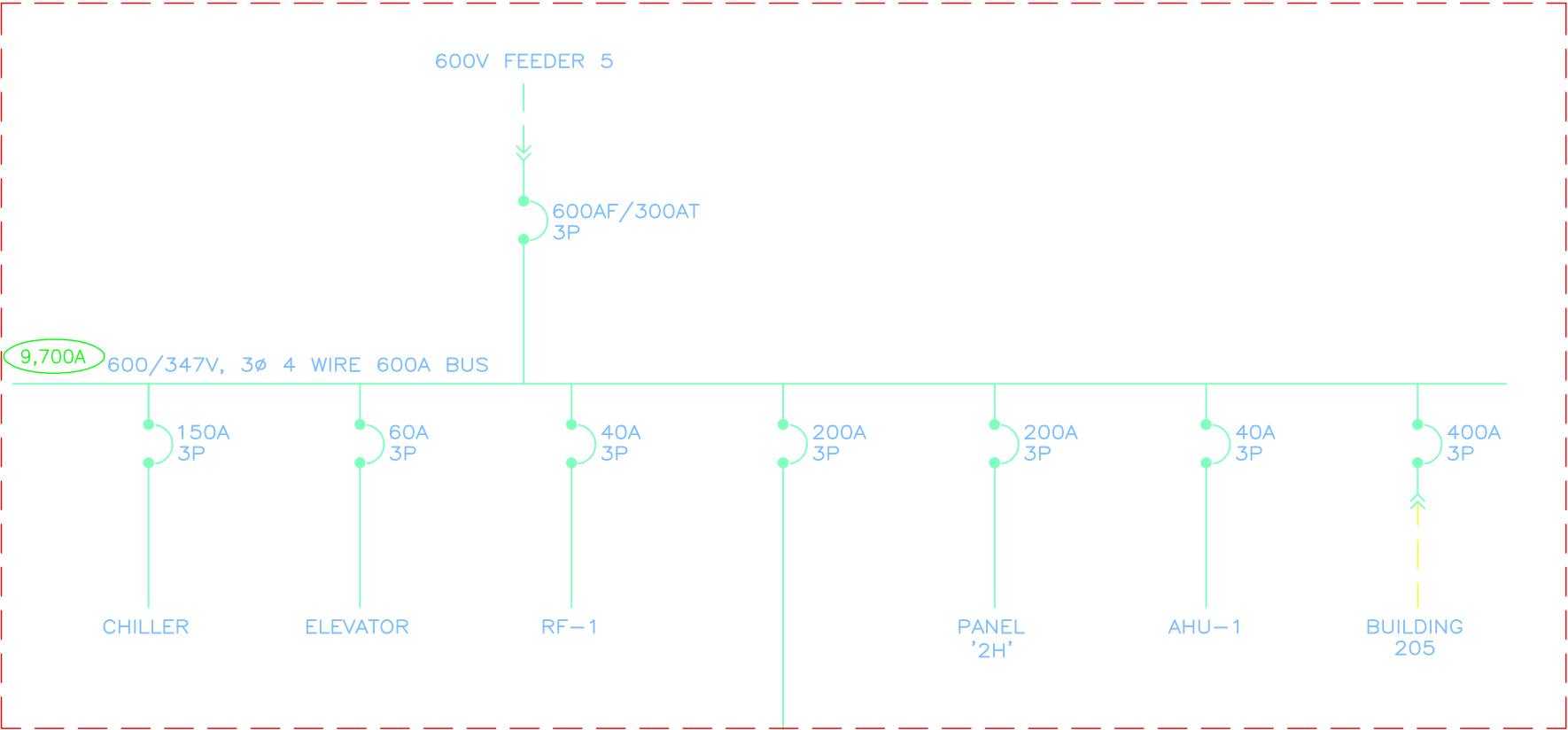


seal

ES
applied engineering
solutions Ltd.
3rd Floor, 1815 Blanshard Street • Victoria • British Columbia • V8T 5A4
Ph: (250) 381 6121 • Fax: (250) 381 6811

project
**VANCOUVER ISLAND UNIVERSITY
ELECTRICAL DISTRIBUTION**
drawing title
BUILDING 190 & 193

designed	scale AS NOTED	date MAR-12-2010
drawn	project no.	
checked	drawing no.	rev.
approved	E9	1



3,000A



1
E10

BUILDING 200



NOT TO SCALE

ELITE
ENGINEERING
LIMITED


professional electrical
engineering services

#2-416 GARBALLY RD
VICTORIA, B.C. V8T 2K1
PHONE: (250) 704-1177
FAX: (250) 704-1187



VANCOUVER ISLAND
UNIVERSITY

seal



**applied engineering
solutions Ltd.**

3rd Floor, 1815 Blanshard Street • Victoria • British Columbia • V8T 5A4
Ph: (250) 381 6121 • Fax: (250) 381 6811

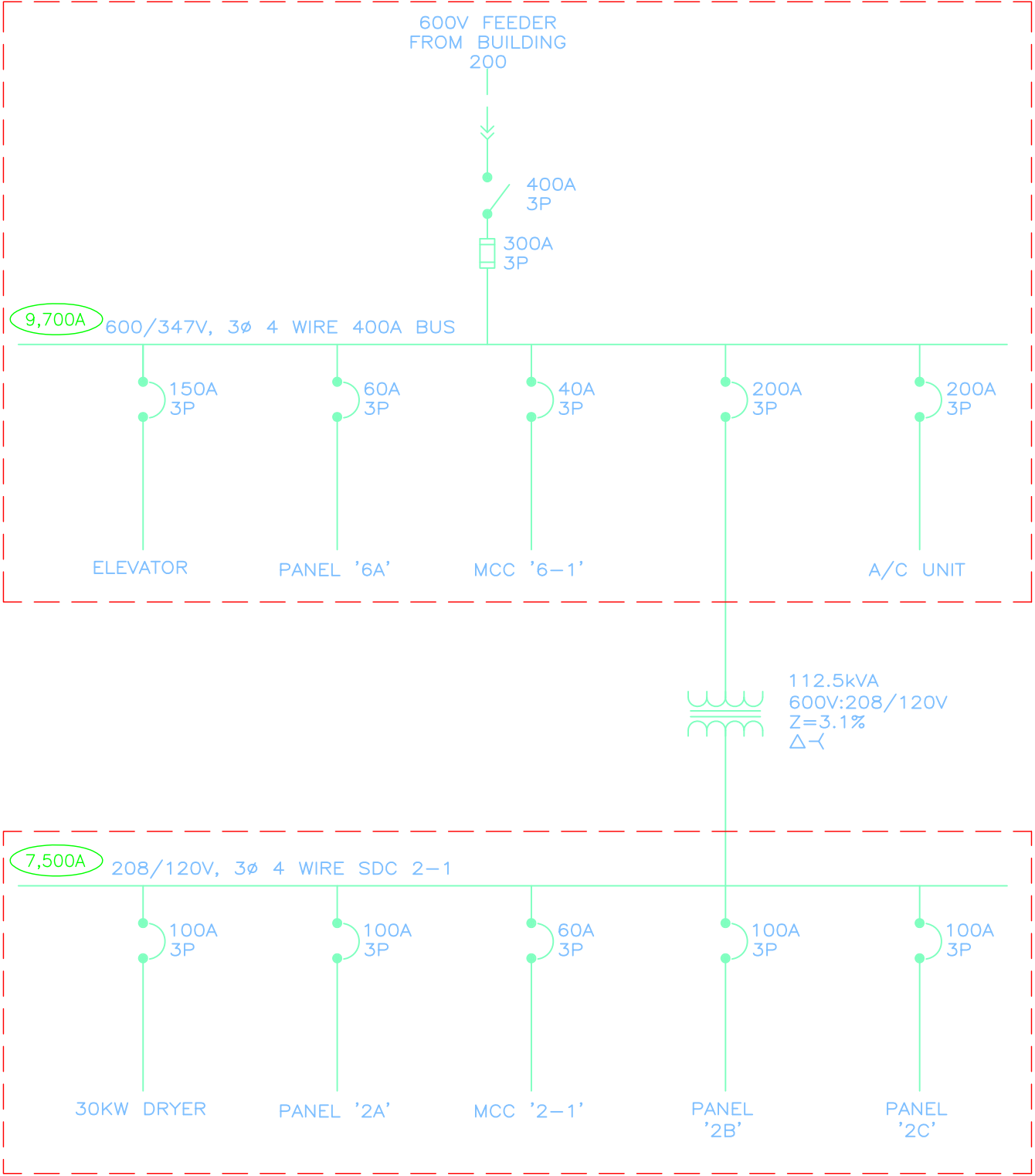
project

**VANCOUVER ISLAND UNIVERSITY
ELECTRICAL DISTRIBUTION**

drawing title

BUILDING 200

designed	scale AS NOTED	date MAR-12-2010
drawn	project no.	
checked	drawing no.	rev.
approved	E10	1



1 BUILDING 205
E11 NOT TO SCALE

**ELITE
ENGINEERING
LIMITED**
professional electrical
engineering services
#2-416 GARBALLY RD
VICTORIA, B.C. V8T 2K1
PHONE: (250) 704-1177
FAX: (250) 704-1187

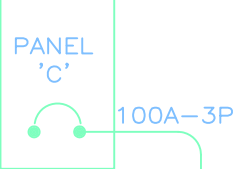
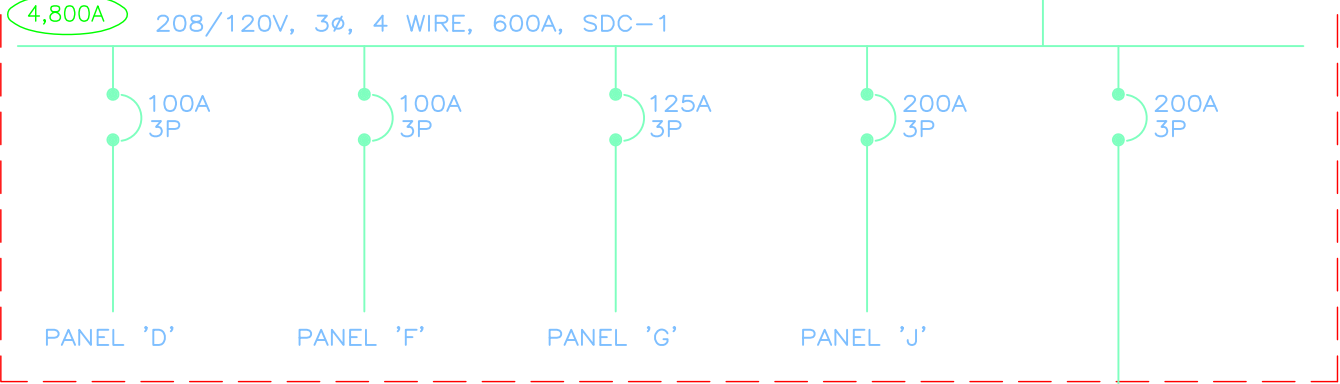
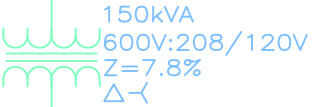
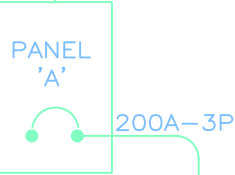
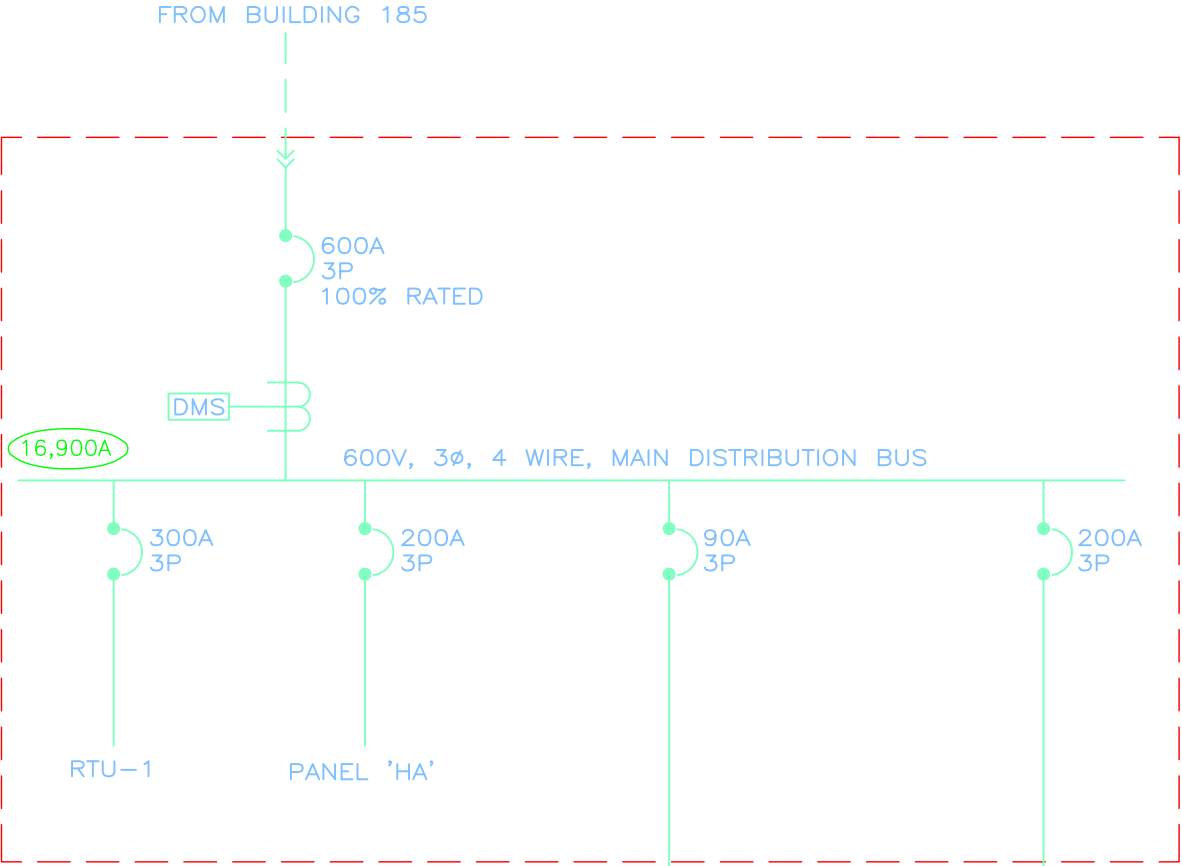


seal



project
**VANCOUVER ISLAND UNIVERSITY
ELECTRICAL DISTRIBUTION**
drawing title
BUILDING 205

designed	scale AS NOTED	date MAR-12-2010
drawn	project no.	
checked	drawing no.	rev.
approved	E11	1



1
E12

BUILDING 250

NOT TO SCALE

**ELITE
ENGINEERING
LIMITED**
professional electrical
engineering services
#2-416 GARBALLY RD
VICTORIA, B.C. V8T 2K1
PHONE: (250) 704-1177
FAX: (250) 704-1187

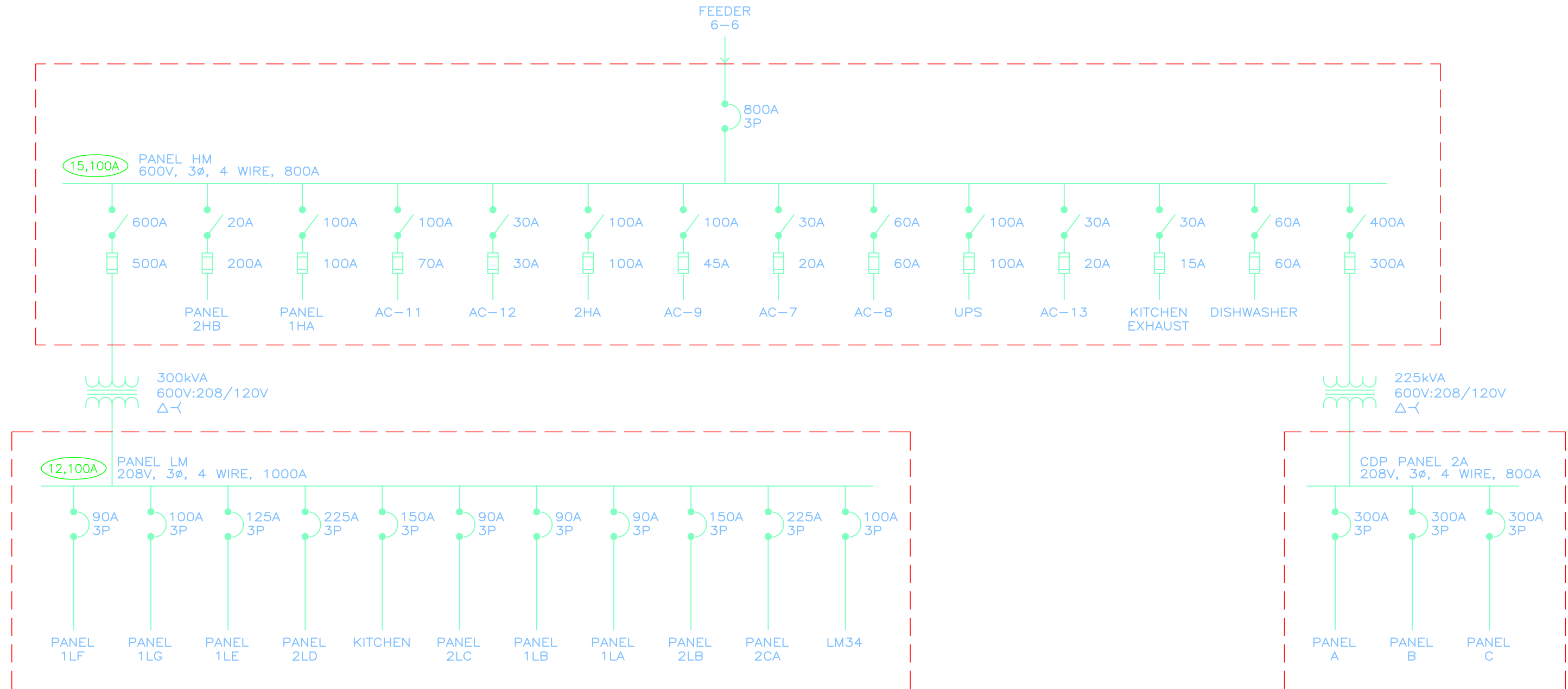

**VANCOUVER ISLAND
UNIVERSITY**

seal


**applied engineering
solutions Ltd.**
3rd Floor, 1815 Blanshard Street • Victoria • British Columbia • V8T 5A4
Ph: (250) 381 6121 • Fax: (250) 381 6811

project
**VANCOUVER ISLAND UNIVERSITY
ELECTRICAL DISTRIBUTION**
drawing title
BUILDING 250

designed	scale AS NOTED	date MAR-12-2010
drawn	project no.	
checked	drawing no.	rev.
approved	E12	1



1 BUILDING 300
E13 NOT TO SCALE

**ELITE
ENGINEERING
LIMITED**
professional electrical
engineering services
#2-416 GARBALLY RD
VICTORIA, B.C. V8T 2K1
PHONE: (250) 704-1177
FAX: (250) 704-1187

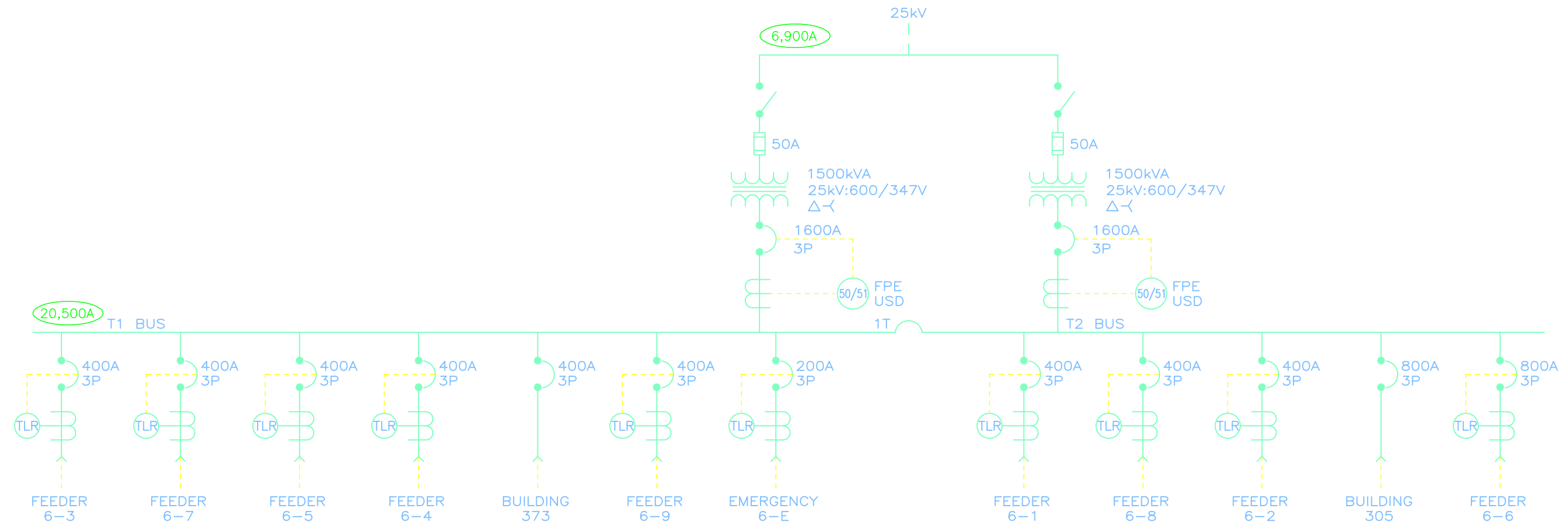


seal



project
**VANCOUVER ISLAND UNIVERSITY
ELECTRICAL DISTRIBUTION**
drawing title
BUILDING 300

designed	scale AS NOTED	date MAR-12-2010
drawn	project no.	
checked	drawing no.	rev.
approved	E13	1



1 BUILDING 305
E14

NOT TO SCALE

ELITE
ENGINEERING
LIMITED
professional electrical
engineering services
#2-416 GARBALLY RD
VICTORIA, B.C. V8T 2K1
PHONE: (250) 704-1177
FAX: (250) 704-1187

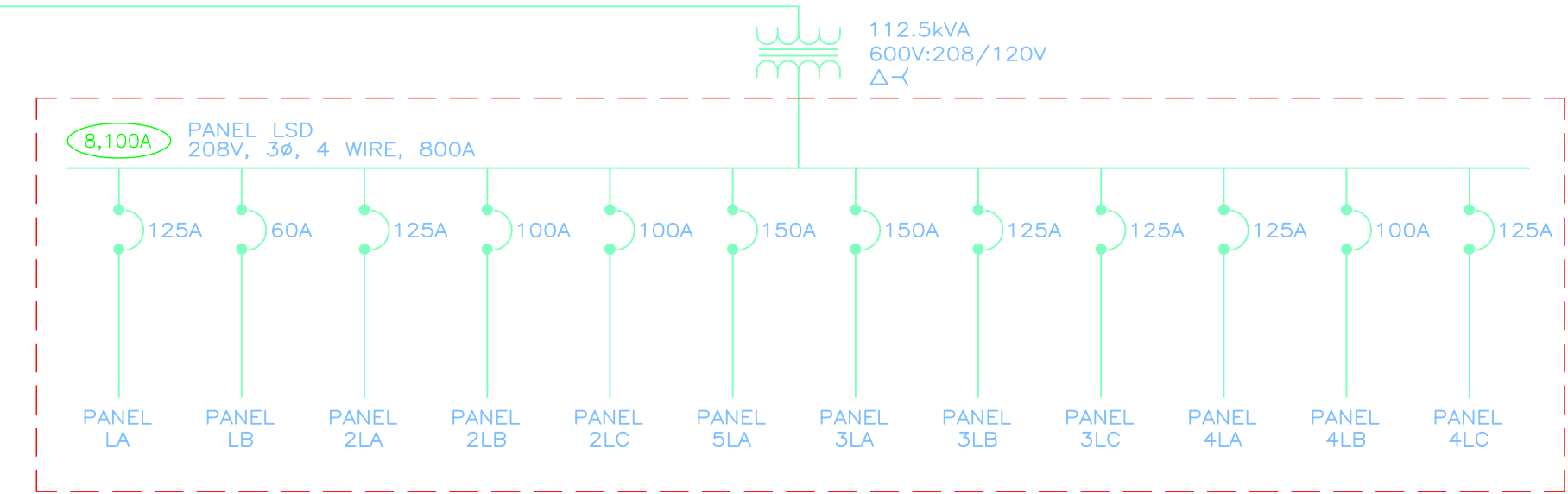
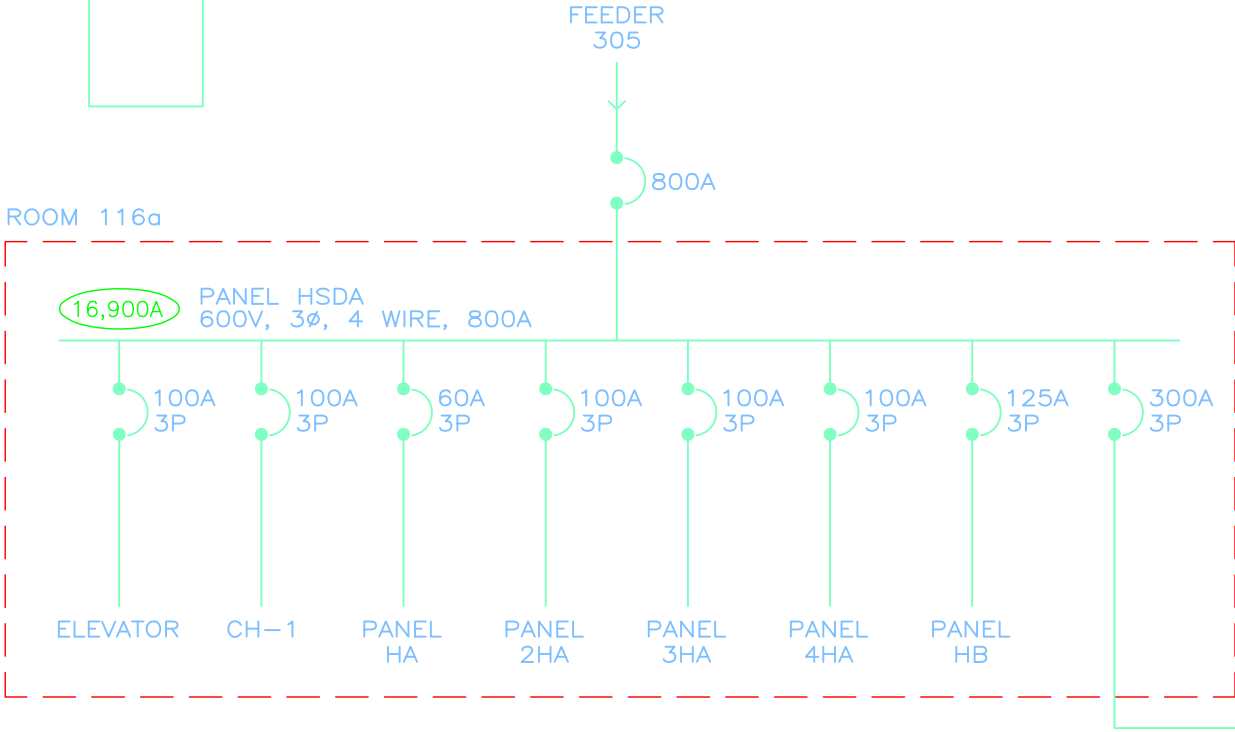
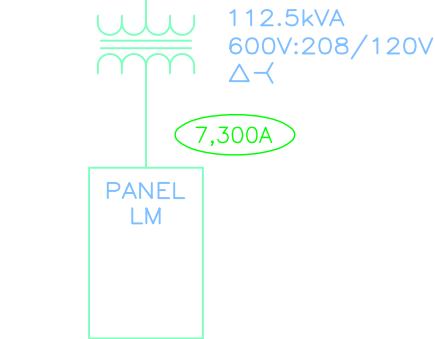
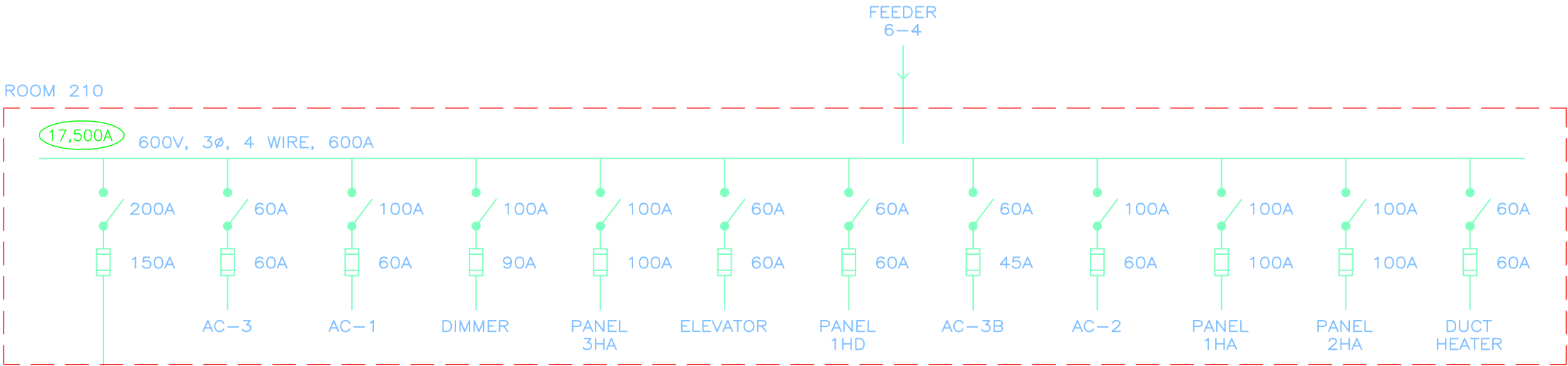


seal

AES
applied engineering
solutions Ltd.
3rd Floor, 1815 Blanshard Street • Victoria • British Columbia • V8T 5A4
Ph: (250) 381 6121 • Fax: (250) 381 6811

project
VANCOUVER ISLAND UNIVERSITY
ELECTRICAL DISTRIBUTION
drawing title
BUILDING 305

designed	scale AS NOTED	date MAR-12-2010
drawn	project no.	
checked	drawing no.	rev.
approved	E14	1



1 BUILDING 305a
E15

NOT TO SCALE

ELITE
ENGINEERING
LIMITED

professional electrical
engineering services

#2-416 GARBALLY RD
VICTORIA, B.C. V8T 2K1
PHONE: (250) 704-1177
FAX: (250) 704-1187


VANCOUVER ISLAND
UNIVERSITY

seal

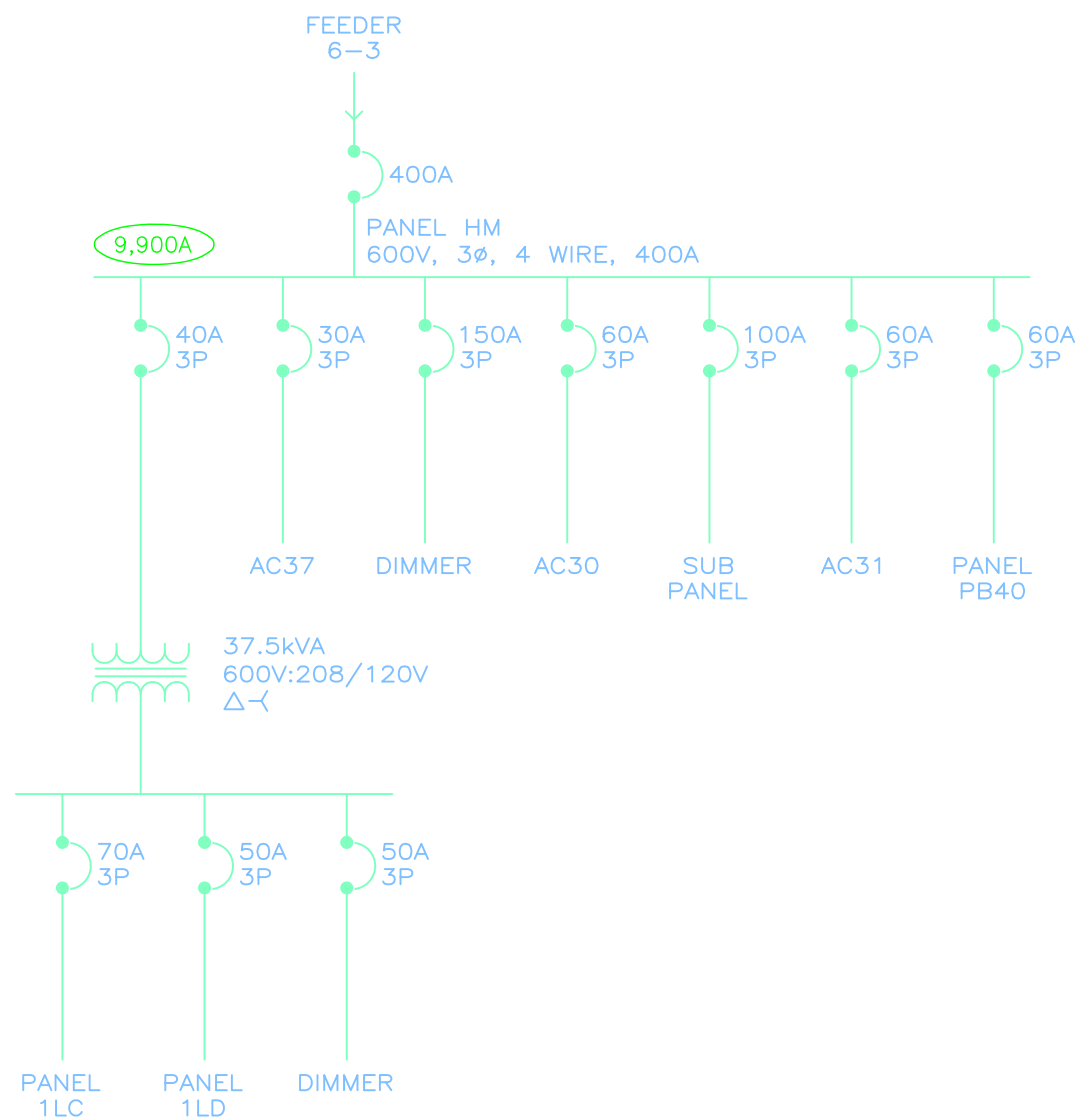

**applied engineering
solutions Ltd.**

3rd Floor, 1815 Blanshard Street • Victoria • British Columbia • V8T 5A4
Ph: (250) 381 6121 • Fax: (250) 381 6811

project **VANCOUVER ISLAND UNIVERSITY
ELECTRICAL DISTRIBUTION**

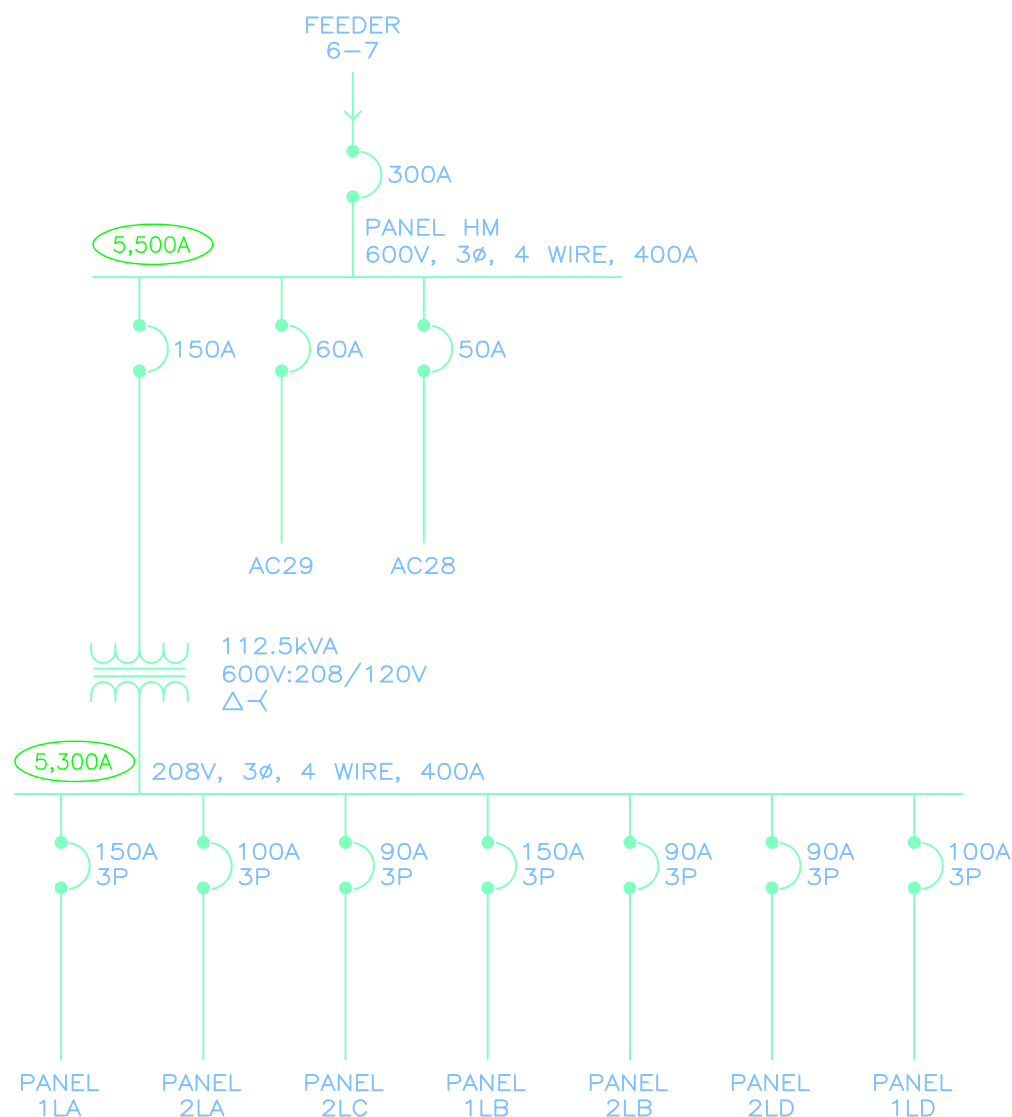
drawing title **BUILDING 305a**

designed	scale AS NOTED	date MAR-12-2010
drawn	project no.	
checked	drawing no.	rev.
approved	E15	1



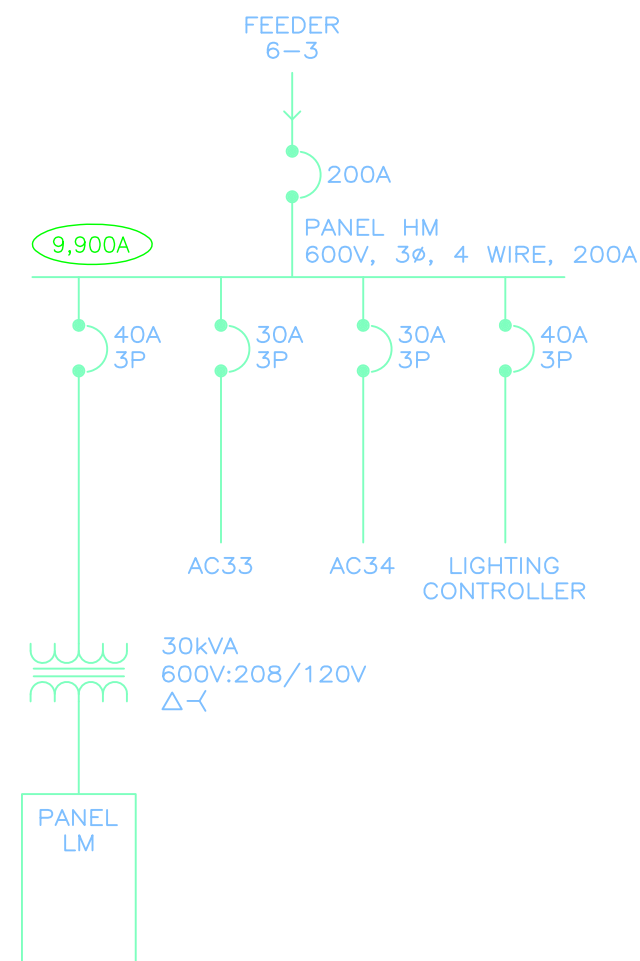
1 BUILDING 310
E16

NOT TO SCALE



2 BUILDING 315
E16

NOT TO SCALE



3 BUILDING 320
E16

NOT TO SCALE

**ELITE
ENGINEERING
LIMITED**
professional electrical
engineering services
#2-416 GARBALLY RD
VICTORIA, B.C. V8T 2K1
PHONE: (250) 704-1177
FAX: (250) 704-1187

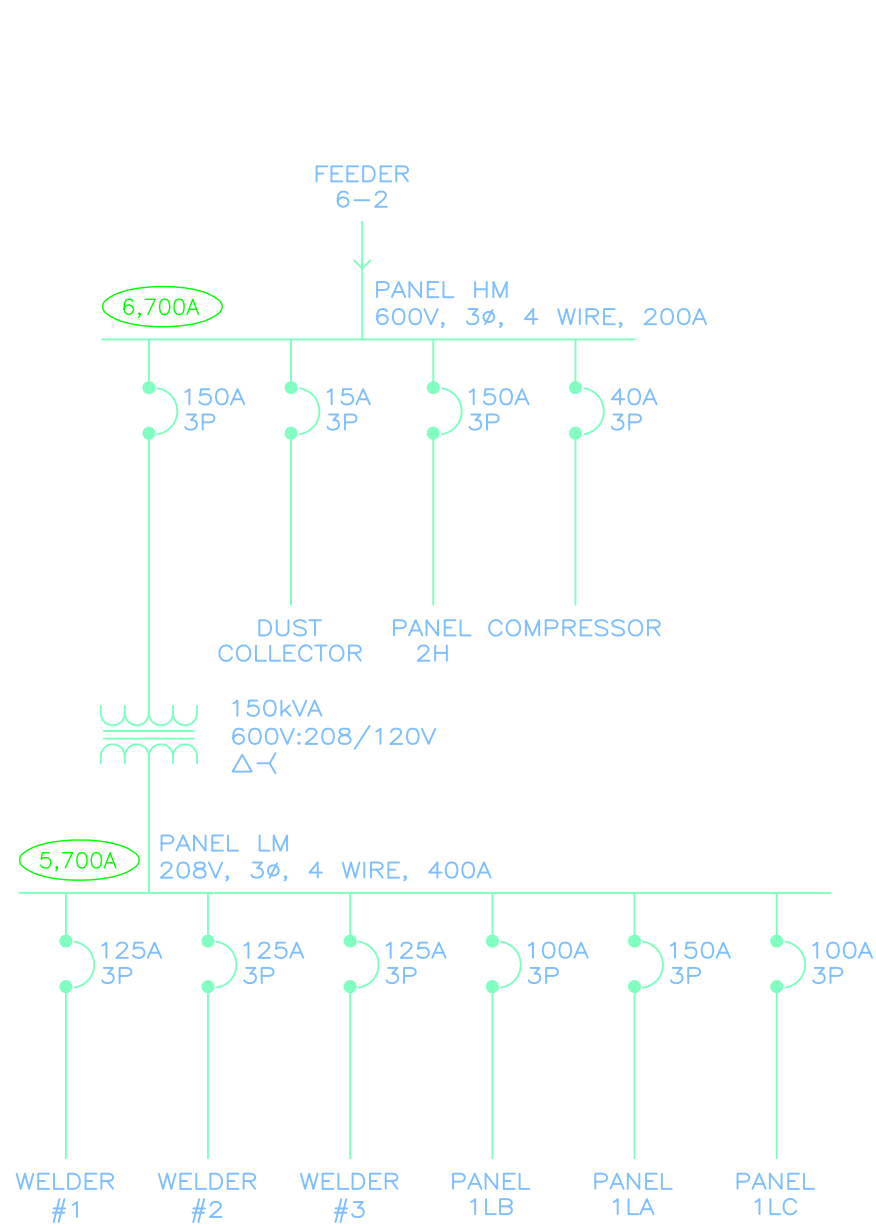


seal

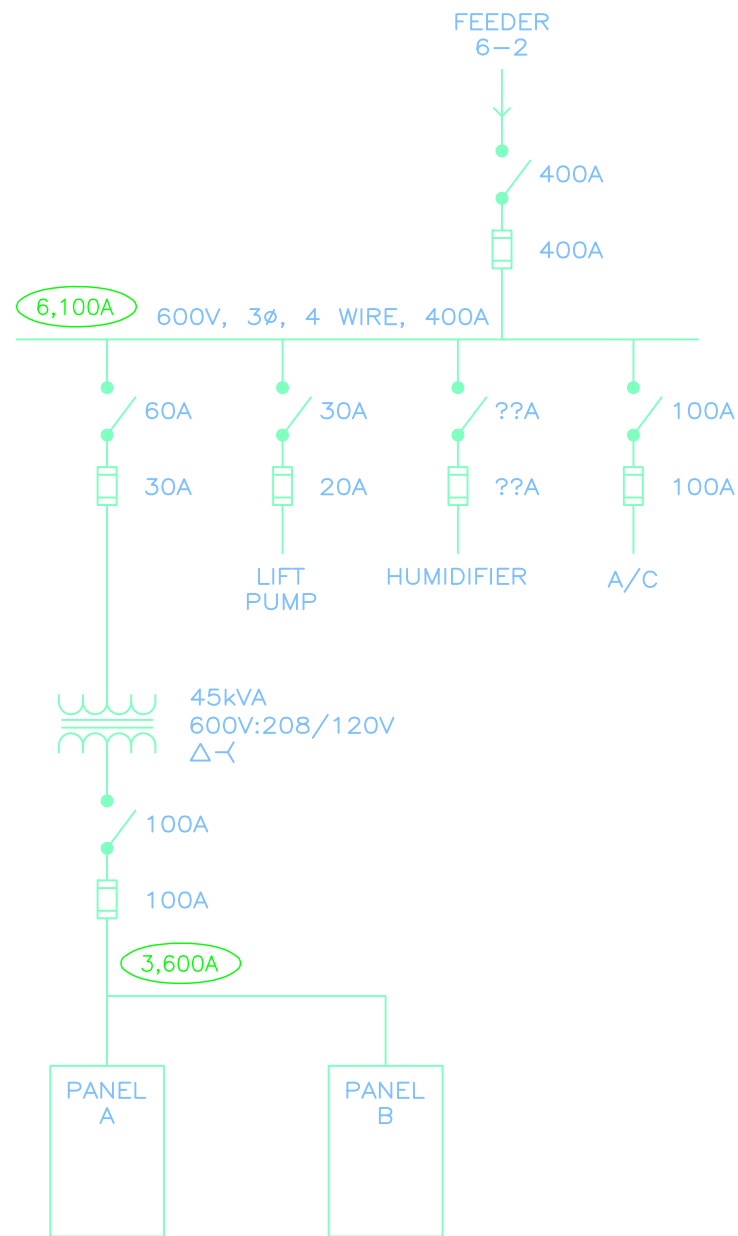


project
**VANCOUVER ISLAND UNIVERSITY
ELECTRICAL DISTRIBUTION**
drawing title
BUILDING 310, 315, 320

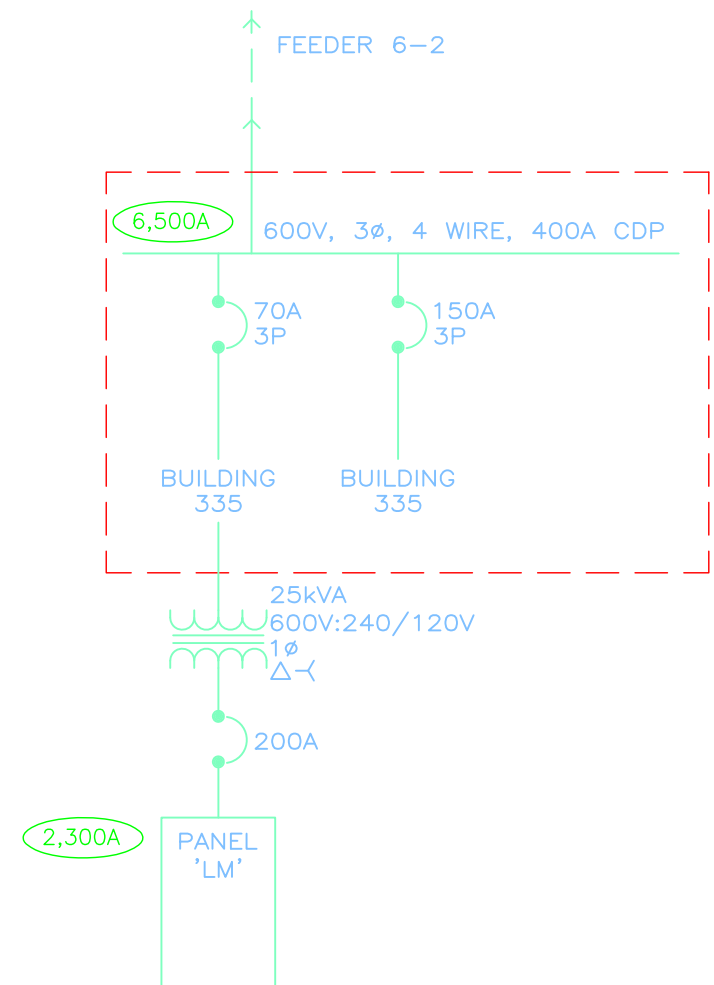
designed	scale AS NOTED	date MAR-12-2010
drawn	project no.	
checked	drawing no.	rev.
approved	E16	1



1 BUILDING 325
E17 NOT TO SCALE



2 BUILDING 330
E17 NOT TO SCALE



3 BUILDING 335
E17 NOT TO SCALE

ELITE
ENGINEERING
LIMITED
professional electrical
engineering services
#2-416 GARBALLY RD
VICTORIA, B.C. V8T 2K1
PHONE: (250) 704-1177
FAX: (250) 704-1187

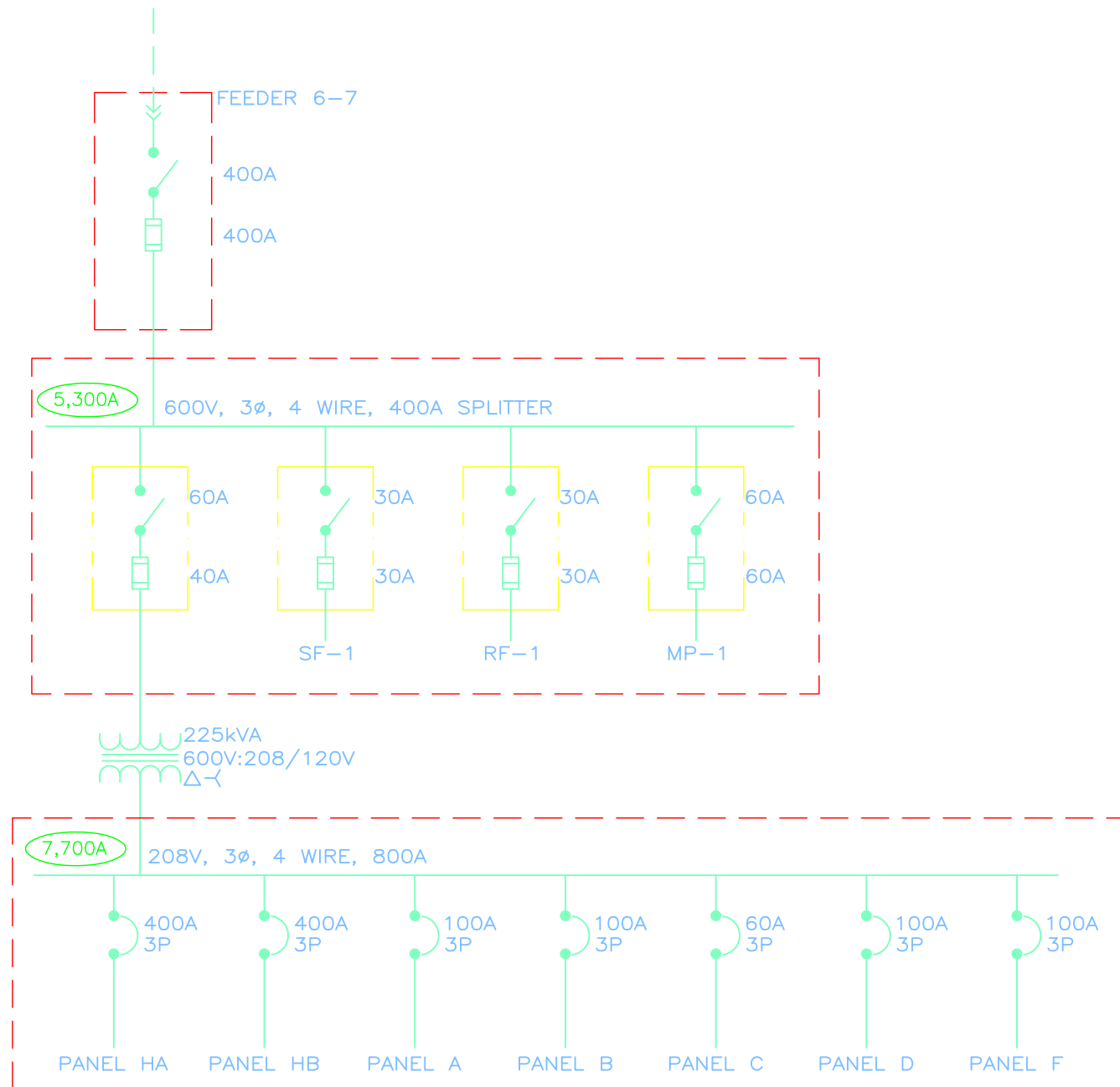


seal

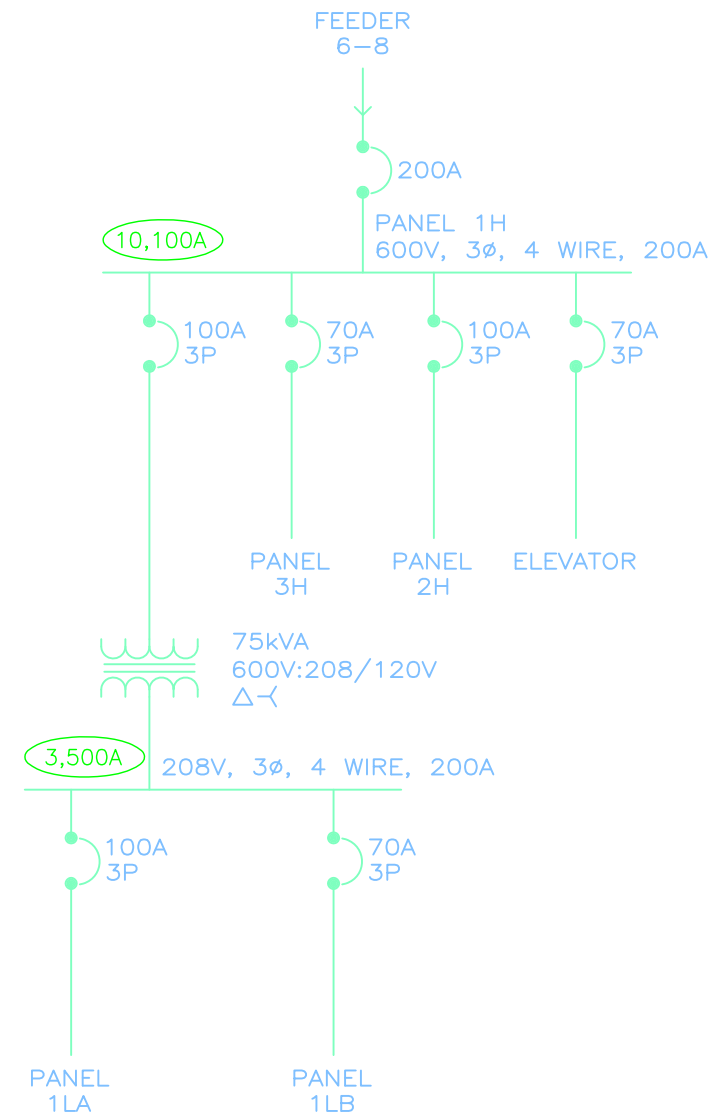
AES
applied engineering
solutions Ltd.
3rd Floor, 1815 Blanshard Street • Victoria • British Columbia • V8T 5A4
Ph: (250) 381 6121 • Fax: (250) 381 6811

project
**VANCOUVER ISLAND UNIVERSITY
ELECTRICAL DISTRIBUTION**
drawing title
BUILDING 325, 330, 335

designed	scale AS NOTED	date MAR-12-2010
drawn	project no.	
checked	drawing no.	rev.
approved	E17	1



1 BUILDING 340 AND 345
E18 NOT TO SCALE



2 BUILDING 355
E18 NOT TO SCALE

ELITE
ENGINEERING
LIMITED
professional electrical
engineering services
#2-416 GARBALLY RD
VICTORIA, B.C. V8T 2K1
PHONE: (250) 704-1177
FAX: (250) 704-1187

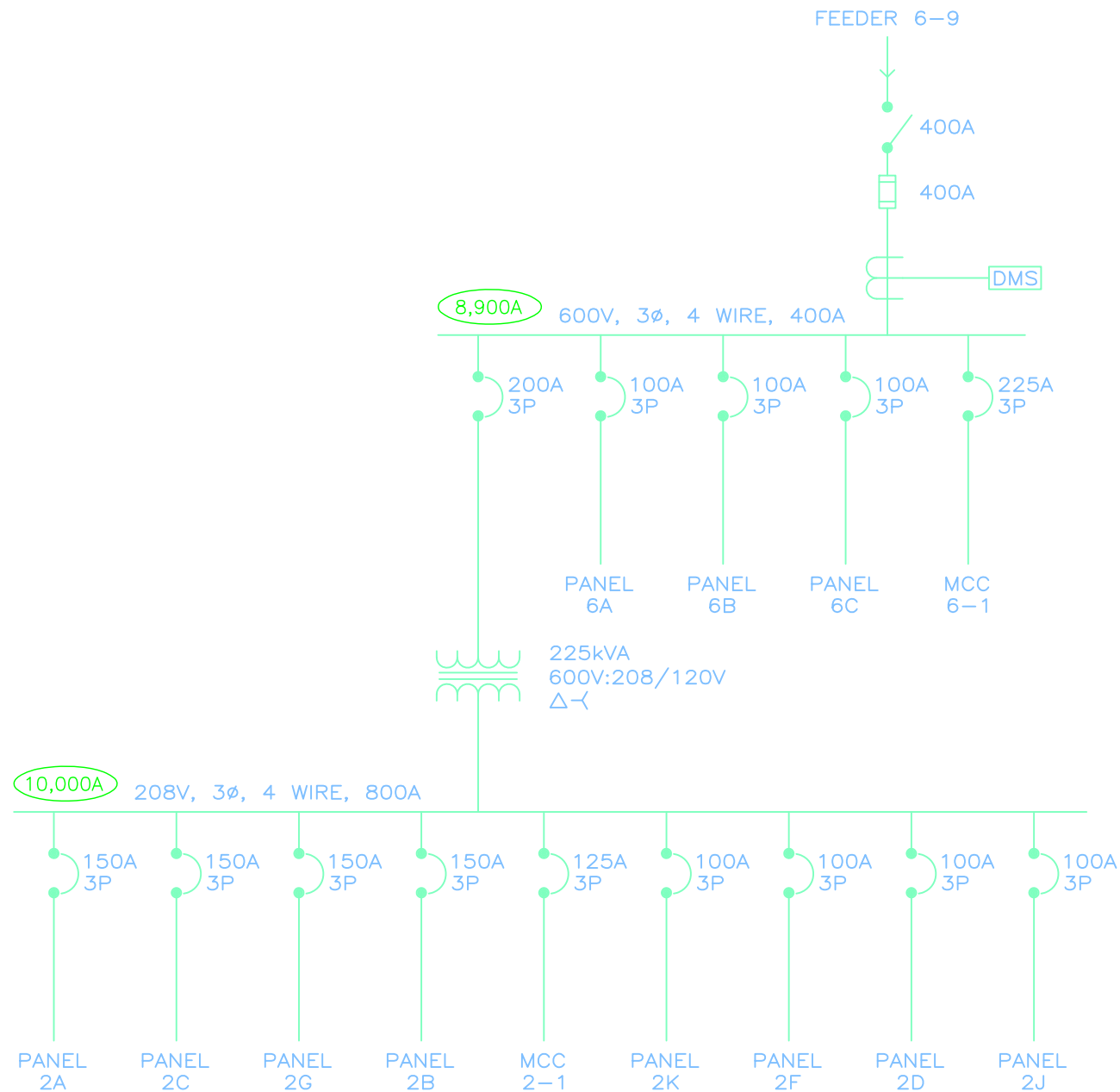


seal

ES
applied engineering
solutions Ltd.
3rd Floor, 1815 Blanshard Street • Victoria • British Columbia • V8T 5A4
Ph: (250) 381 6121 • Fax: (250) 381 6811

project
**VANCOUVER ISLAND UNIVERSITY
ELECTRICAL DISTRIBUTION**
drawing title
BUILDING 340/345, 355

designed	scale AS NOTED	date MAR-12-2010
drawn	project no.	
checked	drawing no.	rev.
approved	E18	1



1 BUILDING 356
E19 NOT TO SCALE

**ELITE
ENGINEERING
LIMITED**
professional electrical
engineering services
#2-416 GARBALLY RD
VICTORIA, B.C. V8T 2K1
PHONE: (250) 704-1177
FAX: (250) 704-1187



seal



project

**VANCOUVER ISLAND UNIVERSITY
ELECTRICAL DISTRIBUTION**

drawing title

BUILDING 356

designed

scale
AS NOTED

date
MAR-12-2010

drawn

project no.

checked

drawing no.

rev.

approved

E19

1